



ROTARY **DRYERS**  
HOT GAS **GENERATORS**  
TURN-KEY **DRYING PLANTS**

**CEMTEC**  
Cement & Mining Technology

## **CEMTEC – your partner for success.**

CEMTEC operates on the basis of individual responsibility. Each member of our team is authorised to make high-level decisions. The entire responsibility for a project – from planning to commissioning – rests with a single person. This means that you will have the same, competent contact partner for all your queries, wishes and suggestions, without exception. In addition to standard orders, your individual requirements can also be fulfilled rapidly and without complications.



**CEMTEC HEADQUARTERS AT ENNS AUSTRIA**

## **CEMTEC manages projects for the cement and processing industry worldwide.**

CEMTEC supervises each project from start to finish. From planning to commissioning. Our product spectrum includes tube mills for grinding a wide range of bulk materials and minerals, as well as rotating drums for thermal treatment (calcination, drying, cooling) and mechanical processing (mixing, washing, conditioning, etc.) of different bulk materials. We also offer erection supervision, commissioning and technical support. Successful projects all over the world attest to the competence of CEMTEC.



CEMTEC hot gas generators with an adequate secondary air supply are designed for a wide range of hot gas temperatures. Available with capacities of between 0.5 and 75 MW, they can be used for different drying applications or connected to a cement mill.

CEMTEC incorporates burners for various fuels ranging from heavy fuel, gas and diesel to combined fuels in MONOBLOCK or DUOBLOCK design, according to the customers' requirements. CEMTEC cooperates only with renowned and experienced burner manufacturers, always striving for the optimum tailor-made solution.



# HOT GAS GENERATORS



**GAS**



**DIESEL**



**HEAVY FUEL OIL**

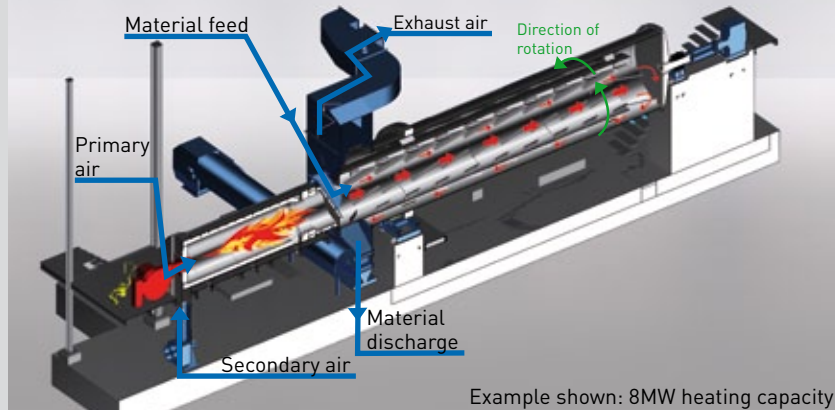
# ROTARY DRYERS

## CEMTEC drying drums for every requirement.

CEMTEC rotary dryers are used in almost all industries. They are available in various designs and sizes, as a single unit or as a complete turn-key solution. CEMTEC can deliver single and double shell dryers in a wide variety of dimensions to meet customer requirements in tailor-made solutions. Hot gas generators are also available from CEMTEC for all kinds of combustibles and a wide range of hot gas temperatures.

When configuring its drying drums to product specifications, CEMTEC performs inhouse laboratory tests to ensure proper process design.

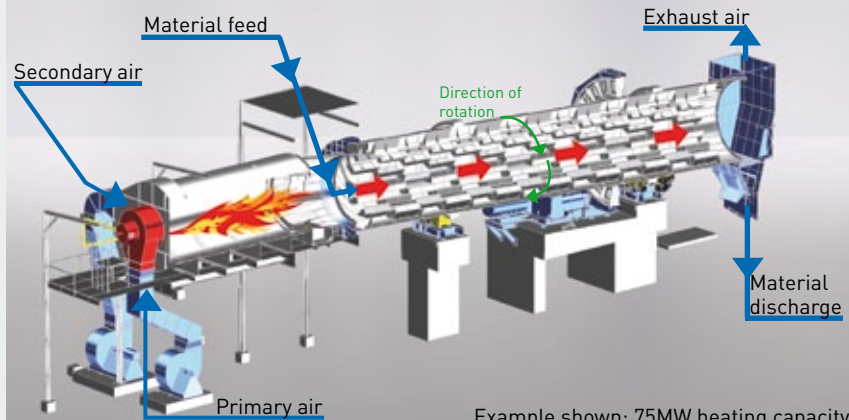
## ROTARY DRYERS



**SCHEMATIC DIAGRAM OF DOUBLE SHELL DRYERS**

Example shown: 8MW heating capacity

**SCHEMATIC DIAGRAM OF SINGLE SHELL DRYERS**



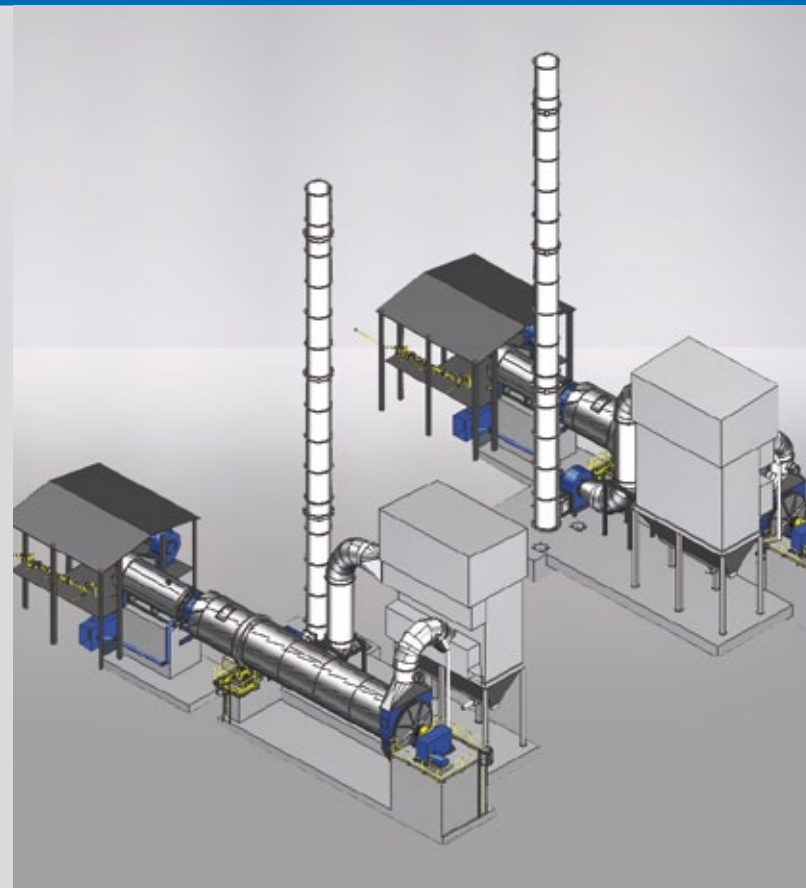
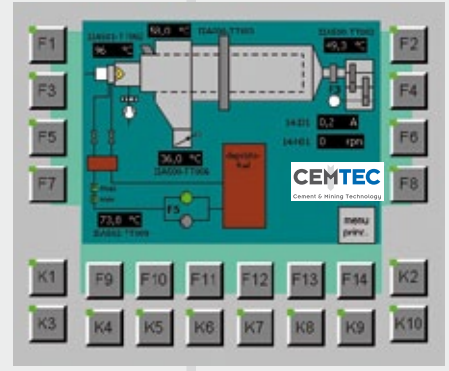
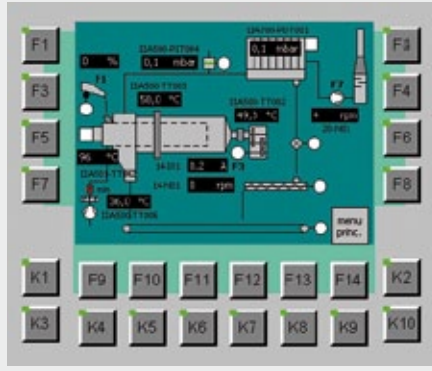
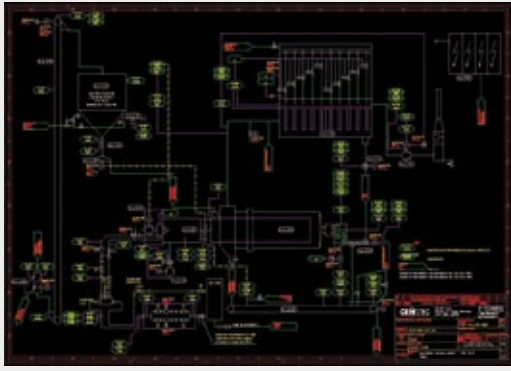
Example shown: 75MW heating capacity

## ROTARY DRYERS IN VARIOUS DESIGNS e.g. AS A SINGLE OR DOUBLE SHELL-DRYER



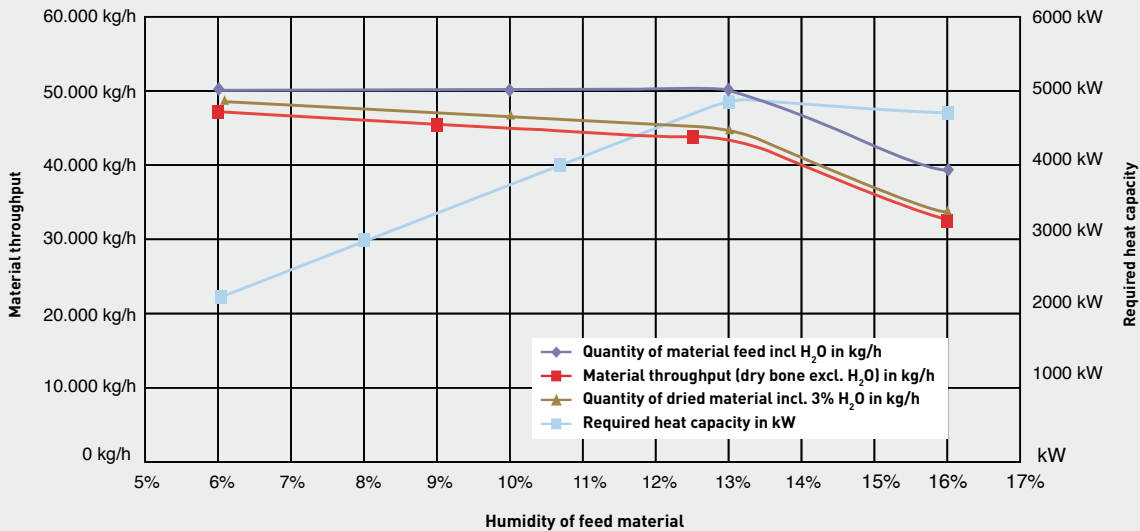


# PLANT PROCESS AND INSTRUMENTATION, CONTROL SYSTEM



## CEMTEC design work start with an analysis of equipment capacity

Curve represents expected throughput based on equipment capacity (typical example)



# CEMTEC & MINING TECHNOLOGY WORLDWIDE

www.cemtec.at

A large industrial machine, likely a pilot plant, is shown in a factory setting. The machine is grey and blue, with a large circular opening. The background shows a complex network of pipes, walkways, and structural elements. The text "EACH PROJECT STARTS IN OUR PILOT PLANT!" is overlaid on a blue semi-transparent banner across the middle of the image.

EACH PROJECT STARTS  
IN OUR **PILOT PLANT!**

**CEMTEC**

Cement & Mining Technology

#### HEADQUARTERS

**CEMTEC Cement and Mining Technology GmbH**

Ennschafenstraße 40

4470 Enns

Austria

+43/7223/83620-0

+43/7223/83620-333

info@cemtec.at